

Strange Kind of Woman

J. Lord/ R. Blackmore/
I. Gillan/ R. Glover/
I. Paice

Intro Bm $\text{F}^\#7+9$

There

Verse Bm A Em

once was a wo-man, a strange kind of wo-man, the kind that gets writ-ten down in

Bm

hi-sto-ry— Her name was Nan-cy, her face was no-thing fan-cy, she

A Em Bm **Verse** Bm

left a trail of hap-pi-ness and mi-se-ry— I loved her, ev-ry-bo-dy loved her, she

A Em Bm

loved ev-ry-one and gave them good re-turn— I tried to take her, I

A Em Bm

ev-en tried to break her, she said, I ain't for tak-in' won't you e-ver learn— I

Chorus N.C. (riff unison with melody) A Em

want you I need you I got-ta be near you I spent my mo-ney as I

Bm N.C.

took my turn— I want you I need you I got-ta be near you, oh—

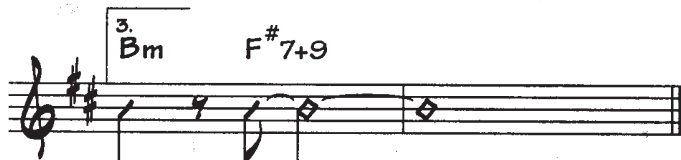
A Em Bm 1. (Break w. drum fill) 2. G (Half tempo feel)

— got a strange kind of wo-man Oh....

D A Bm G D A



SOLO over VERSE, Repeat CHORUS with third ending



Repeat VERSE and CHORUS (first ending). End with SOLO over VERSE

VERSE 3: She looked like a raver, but I could never please her
on Wednesday mornings, boy you can't go far
I couldn't get her, but things got better, she said
"Saturday nights from now on you're my star"

VERSE 4: She finally said she loved me, I wed her in a hurry
No more callers and I glowed with pride
I'm dreaming, I feel like screaming
I won my woman just before she died

Rhythm example

Gtr

Organ

Bass Bm A Em Bm

Dr